



WOOD BURNING  
SAUNA HEATERS  
& FIREPLACES  
2012



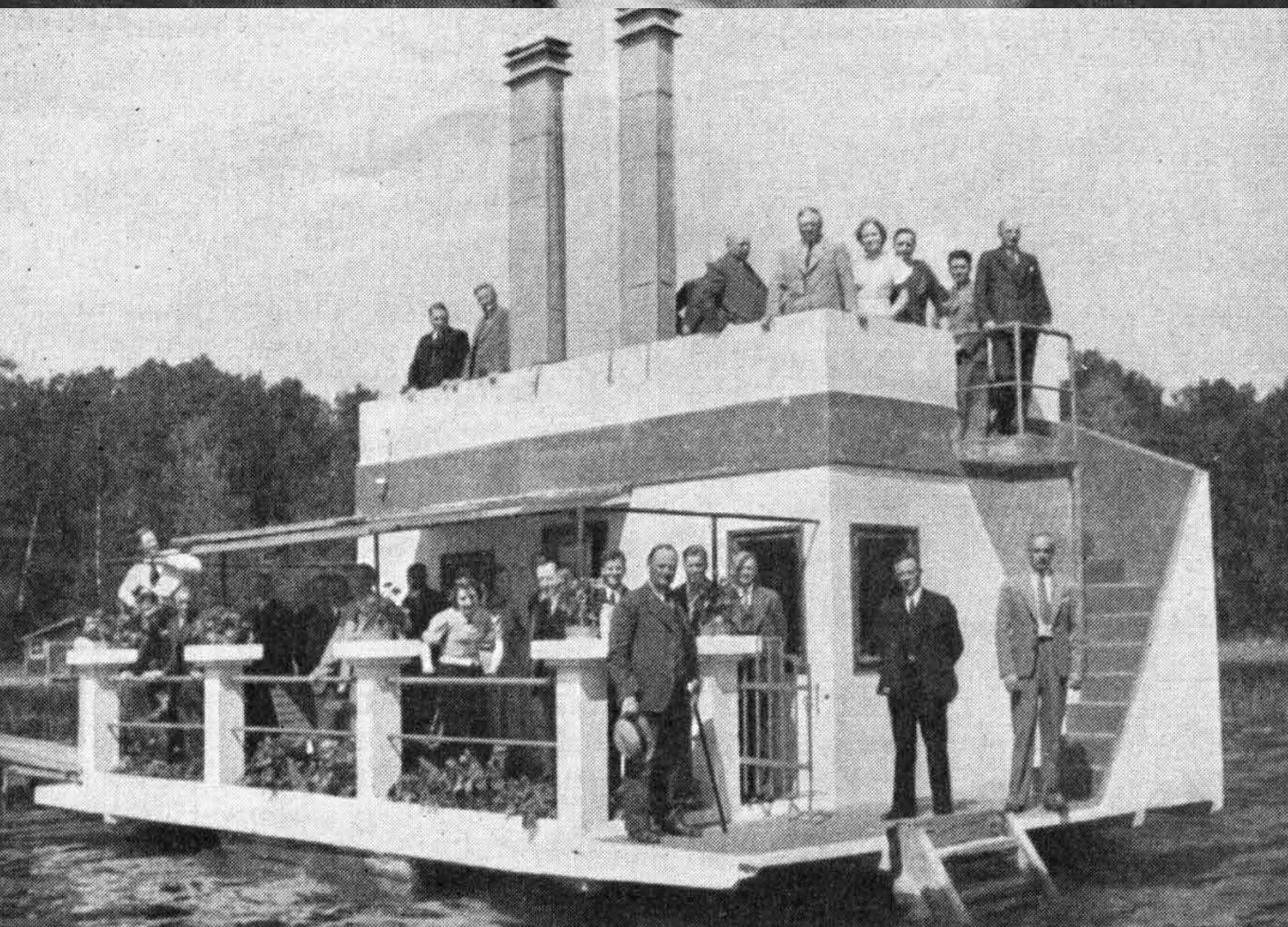
2012

KASTOR  
WOOD BURNING  
SAUNA HEATERS  
& FIREPLACES





our story



We have been following our fire for almost 100 years now. In that time, we have perfected the art of warming saunas and homes in the glow of nature's most passionate expression. Today we are building on that tradition with modern expressions of timeless pleasure—heaters that are as aesthetically pleasing as they are heart-warming.





innovative

Tradition can be a cold shadow or a warm light. Kastor has followed the latter, continually developing and refining every conceivable angle to harnessing fire. Remaining marvellously primal. Yet staying coolly ahead of the curve. Qualities also often appreciated in the Kastor owner.



genuine

To sit before the fire is to leap across the chasms of time, clinging to a thread of human ancestry. There is much more than a flame here. This is the beginning of everything. The catalyst of all human achievement. The re-kindler of the fire within.



individual

When you decide there is no room for compromise, you make more room for the real you. Kastor is available in a wide range of capacities, abilities and sizes. Each is different. Yet all make the same statement—only the very best will do.





# content

## **WOOD BURNING HEATERS**

- 10 Description
- 12 Pleasure principles
- 14 Model range

## **FIREPLACES**

- 24 Description
- 26 Model range

## **FIREPLACE INSERTS**

- 28 Description
- 30 Model range

## **MODULAR CHIMNEYS**

- 32 Description
- 34 Installation examples

## **TECHNICAL DATA**

- 36 Description
- 38 Wood burning heaters
- 42 Fireplaces
- 42 Fireplace inserts
- 44 Modular chimneys
- 44 Chimney Set

# WOOD BURNING HEATERS

There is something special about a wood-fired sauna. The unique soothing caress of heat that doesn't "pinch." The smell of the wood as you feed the fire. The charm of the flames as they lick and play at the window of the stove. Wood-fired sauna, as any aficionado will tell you, is the greatest sauna experience you can treat yourself to.

Kastor has been crafting wood-fired sauna heaters for more than a century. We know what it takes to recreate the most relaxing, pleasurable and healthful sauna experience imaginable. The technological and engineering expertise to get the most heat from the least amount of wood, for instance. Uncompromising material quality in every detail, however small. And the importance of aesthetics: stoves that are clean, elegant, appealing in every way.

Every one of the stoves you'll see in these pages lives up to the strictest design, quality and performance guidelines in the industry. Because every one was designed to be the heart of your sauna.





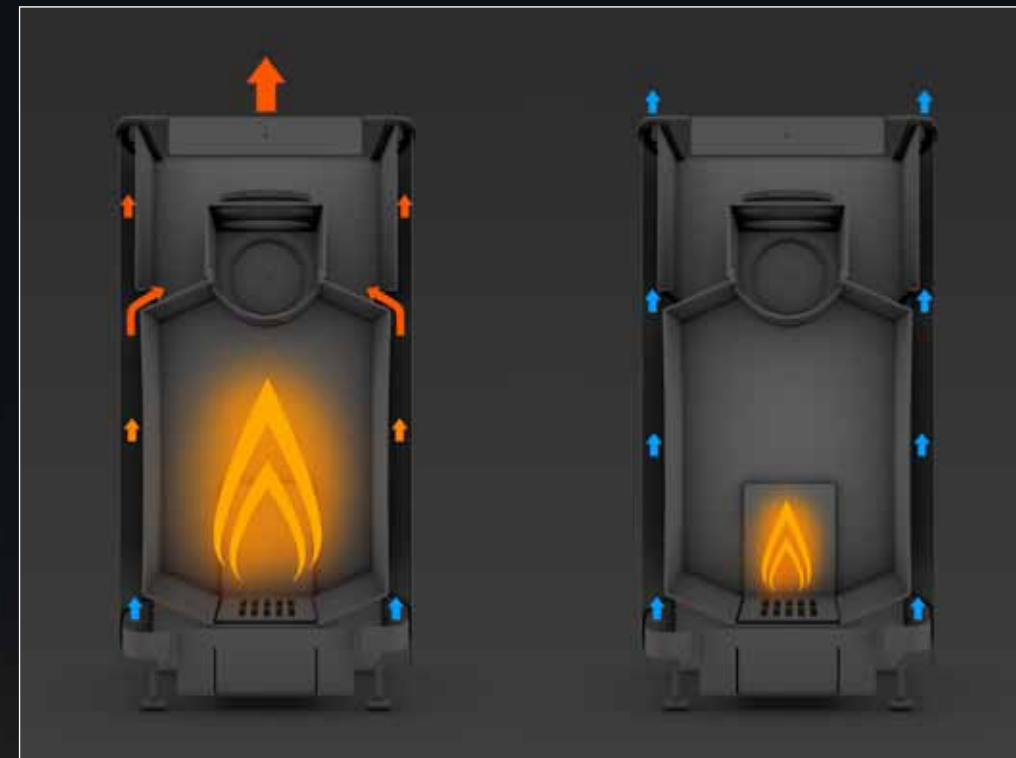
# PLEASURE PRINCIPLES

Harnessing fire for practical use is the basis of our existence. With time, we have invented ever more efficient methods to get more out of fire: hotter from hot. Once they are done, they are dressed in an elegant and polished exterior, which will also not leave its viewer cold.

! **EVERY KASTOR WOOD BURNING STOVE COMES WITH A THREE YEAR WARRANTY FOR THE MATERIAL.**

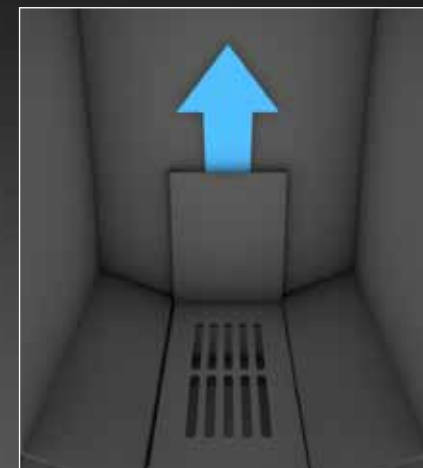
## TECHNICAL HIGHLIGHTS:

1. Large, deep stone compartments hold plenty of rocks, the key to producing billows of soft, rich steam.
2. Innovative Coanda air circulation system means less wood is needed to heat stones and the sauna quickly.
3. The air guide plate protects from erosion caused by fire and makes the stove more solid and durable.
4. Door window of Ceram glass, capable of withstanding 800° C.
5. Sturdy doors.
6. High grade steel used throughout.
7. Outer mantle of stainless alusinkkiä = aluxinc alloy.
8. Adjustable legs.



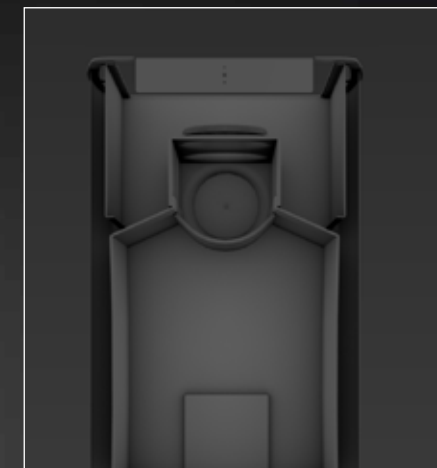
## COANDA AIR CIRCULATION SYSTEM

Air channels between the outer mantle and core guide the air heated in the fire box through slits into the stone compartment. The result is quick, smooth heating of the sauna stones which, in turn, ensures plenty of steam and effective heat circulation for the sauna. As the fire dies down, the fire box walls cool and the air stops rising to the stone compartment (the Coanda effect). This keeps the cooling effect away from the stones, helping them retain their heat longer.



## AIR GUIDE

Surprisingly, the hottest part of the stove is not the top of the fire box but the back wall, where the heat gets sucked due to the air flow. All Kastor stove have an air guide plate in the back of the fire box. This not only reinforces the hottest, most stressed point of the stove, it provides an insulation layer that improves heat capture and saves on wood. Air Guide sets off/control fire and woods are not burning too fast.



## DEEP AND OPEN STONE COMPARTMENTS

Water should come in contact with hot stones—not metal—to generate billows of soft, rich steam. Our sauna stoves are designed with deep and wide stone compartments that ensure water hits stones without contacting the metal walls and cooling the heat source. Besides smoother steam output, the deep stone wells store more heat more effectively, saving on wood.



## DOUBLE MANTLE CONSTRUCTION

The Kastor Incendo sauna stoves boast an advanced double mantle structure, in which air flows between the inner and outer mantle. The inner mantle insulates heat from the outer mantle, which stays safely cooler. Although the outer mantle does heat up as temperatures rise in the sauna, it never gets as scalding as the inner walls can—which means you can plan a sauna with smaller safety distances than usual and make more use of your sauna interior.

INCENDO



*Incendo-20 TS 1*

# Heat of the moment

Incendo's style is fully equalled by its substance. Behind its sleek, stylish lines and modern outlook is a double-mantle core—allowing a rare intensity of heat production within one wall, while remaining cooler and safer on the outer. This allows

shorter safety distances, giving you more freedom of placement within the sauna. You can also choose the convenience of having a 28 l water tank fitted to the left or right side of the heater.



*Water tank set-20*  
Capacity: (l): 28



*Incendo*  
Sauna size (m<sup>2</sup>): 8 – 20  
Output (kW): 18



*Incendo TS 1\**  
Sauna size (m<sup>2</sup>): 8 – 27  
Output (kW): 18 – 20



*View from adjacent room.*

*View from inside sauna.*

## QUICK FACTS

- Sleek construction directs heat up to the rock bed, ensuring heat captured in the stone bed is continually renewed.
- Modern design provides more sauna interior layout and décor options for both smaller and larger spaces.



**INCENDO IS AVAILABLE  
IN 2 DIFFERENT SIZES AND  
2 DIFFERENT MODELS.  
SEE PAGE 40 FOR  
COMPLETE TECHNICAL  
SPECIFICATIONS.**

\*Tunnel version with large door.



SAGA



Saga-20

# Comfort without compromise

Saga takes the delights of wood-fired sauna bathing to indulgent new heights. With capacities of 150 to 230 kg of exposed stones, Saga stoves provide wave after wave of the softest,

most comfortable heat and steam that can be experienced. The rugged flair of its top-to-bottom stone exposure makes it a welcoming and mesmerising centrepiece for your sauna interior.



**Saga**  
Sauna size (m³): 8 – 27  
Output (kW): 18 – 20



**Saga JK\***  
Sauna size (m³): 8 – 27  
Output (kW): 18 – 20



**Saga KSIL\*\***  
Sauna size (m³): 8 – 27  
Output (kW): 18 – 20

## QUICK FACTS

- Saga heaters are also available in through-wall versions that enable a fireplace in one room, and sauna in the other.
- Because of the maximum exposure of stones, saunas with Saga stoves heat very quickly and efficiently.



**SAGA IS AVAILABLE IN 2 DIFFERENT SIZES AND 3 DIFFERENT MODELS. SEE PAGE 40 FOR COMPLETE TECHNICAL SPECIFICATIONS.**

\*Tunnel version with small door. \*\*Tunnel version with large door.



KARHU



Karhu-20

# Reassuringly brilliant

Visually, it is easy to appreciate how Karhu's handsome lines and shiny steel finish can lift any sauna décor. Yet below the surface lies the soul of an engineer. Karhu's deep stone well, air flow plate and reinforced shutter ensure stability and

strength. Its intelligent Coanda air flow system uses less wood to provide maximum heating efficiency. No feature is extravagant, no detail unplanned—it is designed to perfect the sauna climate in every sense.



**Karhu**  
Sauna size (m³): 5 – 37  
Output (kW): 7 – 30



**Karhu ES**  
Sauna size (m³): 8 – 28  
Output (kW): 18 – 20



**Karhu VO\***  
Sauna size (m³): 5 – 34  
Output (kW): 12 – 30



**Karhu JK\*\***  
Sauna size (m³): 5 – 37  
Output (kW): 12 – 30



**Karhu Pata**  
Output (kW): 15

## QUICK FACTS

- The tunnel version can be installed in a wall between rooms, treating your guests to a comforting fireplace on one side and a relaxing sauna in the next.
- All Karhu stove models can be heightened or lowered as needed thanks to adjustable legs.



**KARHU IS AVAILABLE IN 6 DIFFERENT SIZES AND 5 DIFFERENT MODELS. SEE PAGE 38 FOR COMPLETE TECHNICAL SPECIFICATIONS.**

\*Water tank on the right side seen from the door. \*\*Tunnel version with small door.



KSIS



**KSIS**  
Sauna size (m³): 8 – 37  
Output (kW): 18 – 30



*Dark gray door frame.*



*Chrome door frame.*

# Warm welcome

KSIS stoves are modern classics in the world of wood-fired sauna stoves. Made from the most durable steel, the simple, calming frames of KSIS exude an aura of quality. At their heart, the very latest in heating and airflow innovation ensures

wave after wave of extravagant warmth and steam. Enjoy the play of fire in the big glass window front. Or choose the simplicity of an elegant brushed steel front. Either way, KSIS makes your statement.



**KSIS VO\***  
Sauna size (m³): 8 – 37  
Output (kW): 18 – 30

*View from inside sauna.*



*View from adjacent room.*

## QUICK FACTS

- The through-wall model gives you the best of both worlds, treating you to wood-fired heat in adjacent rooms.
- KSIS heater is also available as a watertank model, left or right side of the heater.



**KSIS IS AVAILABLE IN 3 DIFFERENT SIZES AND 2 DIFFERENT MODELS. SEE PAGE 40 FOR COMPLETE TECHNICAL SPECIFICATIONS.**

\*Water tank on the right side seen from the door.







# FIREPLACES

We all know the joys of a fireplace. It warms up room fast and effective and works as well as a special interior. There is no replacing the unique feeling of sitting by the glow of the fire, its light and heat setting the mood for everything from quiet contemplation to discussion into the wee hours.

A fireplace can be your chance to bring the family together. It can be the spot where the party begins and ends. Or it can be your comfort zone for a few minutes of reflection at the end of a busy day.

## PURE HEAT

Kastor fireplaces are models of performance, economy and design. Backed by almost a century of ongoing development, each represents the highest possible standards in burning efficiency, safety and aesthetics. All of our fireplaces warm up quickly and with a minimum of fuss. They fit in as easily in an urban home as they do in a holiday cottage. And their structure makes them easy to install—even in a finished building, and even by yourself.





# Fireplaces made easy

Kastor makes enhancing the value of your home or cottage with a modern and attractive fireplace as easy as it can be. Our fireplaces can be installed in any dwelling with an existing chimney, or anywhere it is possible to install one of our ready-made modular chimneys.

Always follow fire prevention regulations concerning safety distances when installing your Kastor fireplaces. Technical information and sizes are available on page 42.

**NEW**



## Melody Swing

Swing warms the room quick and effectively—the latest advances in heating technology burn brightly within its luxurious soapstone-clad exterior, finished with an oversized picture window.

Room volume: max 230 m<sup>3</sup>  
Output range: 2 – 15 kW  
Dimensions (w,d,h):  
560 x 450 x 935 mm  
Weight: 204 kg



## Opera

The handsome stone clad Opera with the big glass door holds many little technical innovations that expand its use from a mere decorative highlight to a viable heat source. The colour of the stone cladding can be easily changed. CE certified.

Room volume: max 250 m<sup>3</sup>  
Output range: 2 – 16 kW  
Dimensions (w,d,h):  
640 x 505 x 1315 mm  
Weight: 210 kg



## Tango

Tango truly improves the view with a large glass door and side windows that send fire light flickering across the room. A modern, sophisticated and compact fireplace, Tango is also ideal for smaller rooms. CE certified.

Room volume: max 200 m<sup>3</sup>  
Output range: 2 – 12 kW  
Dimensions (w,d,h):  
520 x 525 x 1425 mm  
Weight: 160 kg



## Princess

Princess provides a semi-wraparound view of your gently crackling fire thanks to its bay window design. This compact but efficient fireplace will fit even small rooms thanks to its size and ease of use and maintenance.

Room volume: max 250 m<sup>3</sup>  
Output range: 2 – 16 kW  
Dimensions (w,d,h):  
670 x 460 x 1130 mm  
Weight: 85 kg



## Melody

Lightweight and free-standing, Melody makes an immediate impression—stylistically and by warming the room quickly and efficiently. Available in soapstone or with a lower weight steel cladding. CE certified.

Room volume: max 230 m<sup>3</sup>  
Output range: 2 – 15 kW  
Dimensions (w,d,h): 550 – 616 x 402 x 935 – 1120 mm  
Weight: 86 kg (steel cladding), 287 – 366 kg (soap stone cladding)



## Bravo Soapstone

Bravo is an attractive option for any room that needs quick heating and an instant décor lift. Can be connected to the chimney from the top or the back.

Room volume: max 230 m<sup>3</sup>  
Output range: 2 – 15 kW  
Dimensions (w,d,h):  
630 x 530 x 1140 mm  
Weight: 270 kg





# FIREPLACE INSERTS

There is no disputing the beauty a fireplace can add to the room. But a Kastor fireplace insert will help you get even more from it, radically improving its clean heat-generating and storage properties.

The insert is the soul of the fireplace. Within it, the fire burns smoke-free, and ashes and flue gas are kept under control. You can build almost any kind of fireplace around a Kastor insert – and conversely, you can install an attractive Kastor insert into almost any fireplace.

## TIMELESS QUALITY

Steel is one of the few materials that can withstand fire year in, year out, even for decades of expanding and contracting with every new fire. This calls for particular attention to the quality of the steel and built-in tolerances for expansion and shrinking. As specialists in the art of harnessing fire, we've chosen only the finest and strongest steel to house your fireplace—a complementary investment that will help you get the most from your fire today and in the years to come.



# Follow a better fire

Our wide range of inserts lets you turn your existing open fireplace into an even more attractive and effective source of warmth. If you are installing a new fireplace, an insert is a given from the

start and is easy to build around. Explore the many choices available, each designed to provide efficient heat while complementing your decor.



TS-1

Simple, clean lines contribute to a seamlessly elegant insert, right down to the smallest finished details.

*Room volume: 30 – 200 m³  
Output range: 2 – 15 kW  
Weight: 100 kg*



TS-2

The rounded glass door gives everyone a view of the fire and spreads its light evenly across the room.

*Room volume: 30 – 200 m³  
Output range: 2 – 15 kW  
Weight: 100 kg*



TS-3

Engineered for optimum combustion and heat distribution, styled with a large glass door for optimum appreciation.

*Room volume: 50 – 200 m³  
Output range: 2 – 20 kW  
Weight: 126 kg*



TS-6

This highly advanced combustion system saves on wood thanks to its efficient burning system. The curved glass door spreads the fire's flickering light throughout the room. CE certified.

*Room volume: 20 – 120 m³  
Output range: 1 – 10 kW  
Weight: 83 kg*



TS-26

Smart dual-sided glass door requires less room to open.

*Room volume: 30 – 200 m³  
Output range: 2 – 15 kW  
Weight: 54 kg*



TS-36

Elegance personified thanks to a gently rounded glass door.

*Room volume: 30 – 200 m³  
Output range: 2 – 15 kW  
Weight: 56 kg*



TS-56

With its lovely bay window design, TS-56 makes the fireplace a living work of art.

*Room volume: 30 – 250 m³  
Output range: 2 – 16 kW  
Weight: 69 kg*



TS-57

Bay windows capture the fire's display from every angle. TS-57 can be embedded into the fireplace.

*Room volume: 30 – 250 m³  
Output range: 2 – 16 kW  
Weight: 69 kg*



# MODULAR CHIMNEYS

The chimney is not only a very necessary part of the fireplace or sauna heater, it can be a décor and mood addition. Best of all, you don't need have to be a DIY guru or engineering expert to install one—Kastor modular chimneys can be simple to build using our easy step-by-step system. The parts are guaranteed to fit and you do not need special tools to attach them.

Kastor modular chimneys are high quality, safe, and CE certified, and come in a wide range of colours to complement your interior where the pipe will be exposed. The internal piping in Kastor modular chimneys is made of strong, acid-proof steel to withstand heat, cold, moisture and flue gasses. We use two sorts of wool material for insulation and the outer mantle is powder-painted or finished in stainless steel.

With Kastor modular chimneys, almost any room or building can be equipped with a fireplace. All kinds of configurations are possible, including running the chimney straight through the wall and attaching it to the outer wall of the house. Just remember to ask the relevant authorities about local building ordinances first.



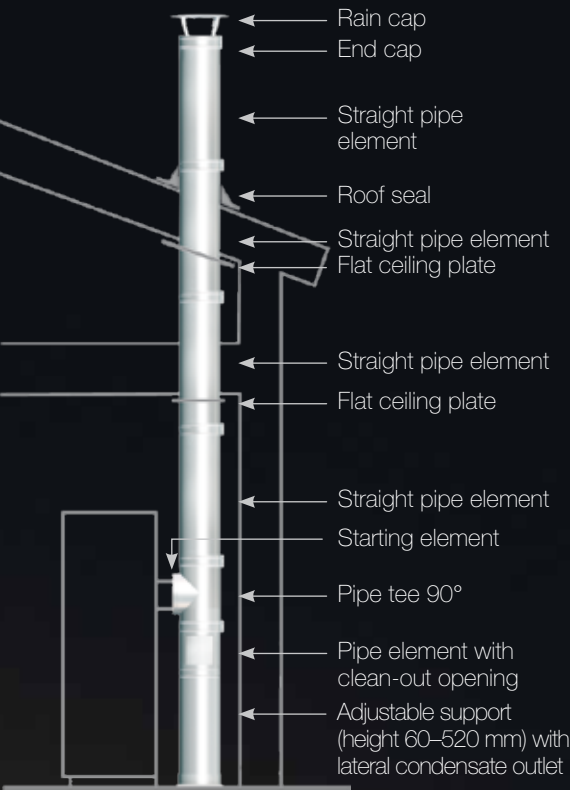


# Installation examples

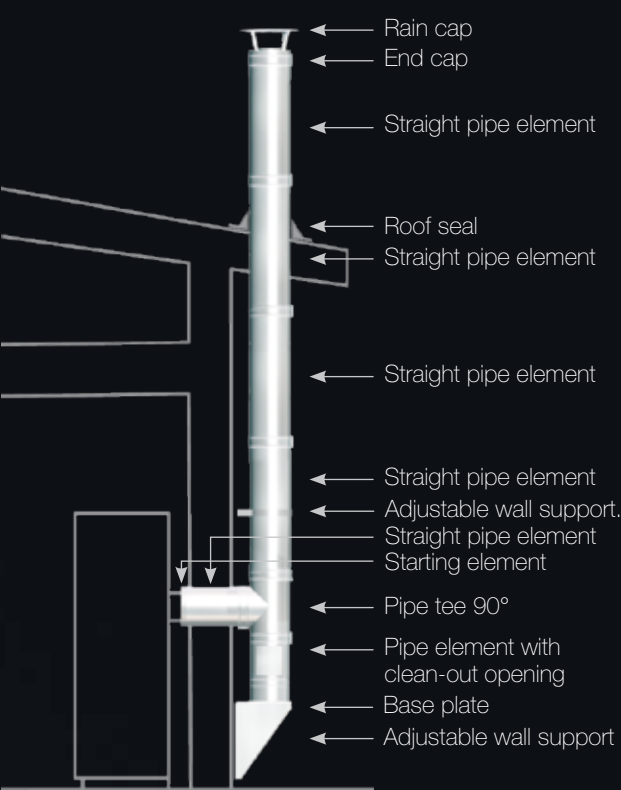
As you can see, all kinds of chimney configurations are possible. Installation is based on one simple principle: use the modules to assemble exactly the chimney you need by

adding piece by piece from the fireplace connection up to the rain cover on top. Always check with local authorities for building ordinances and permissions before starting.

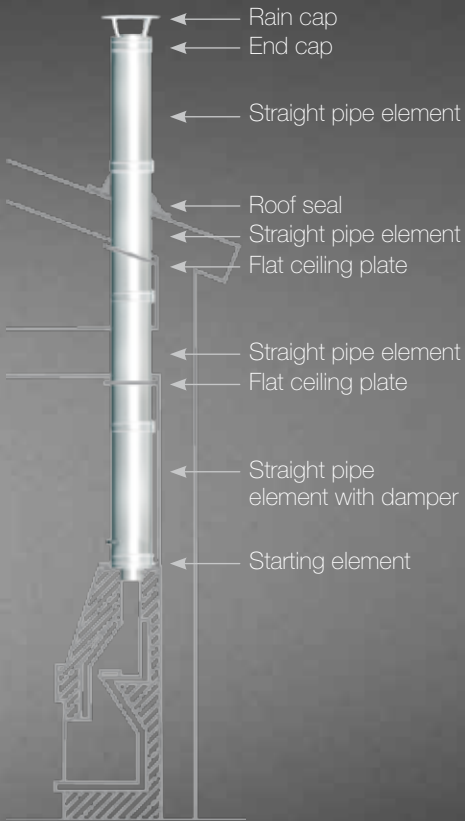
Internal installation from back



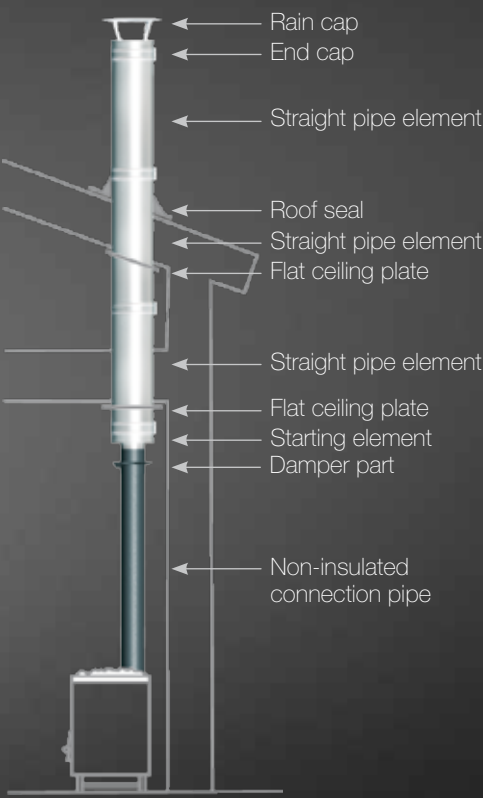
Installation on outside wall



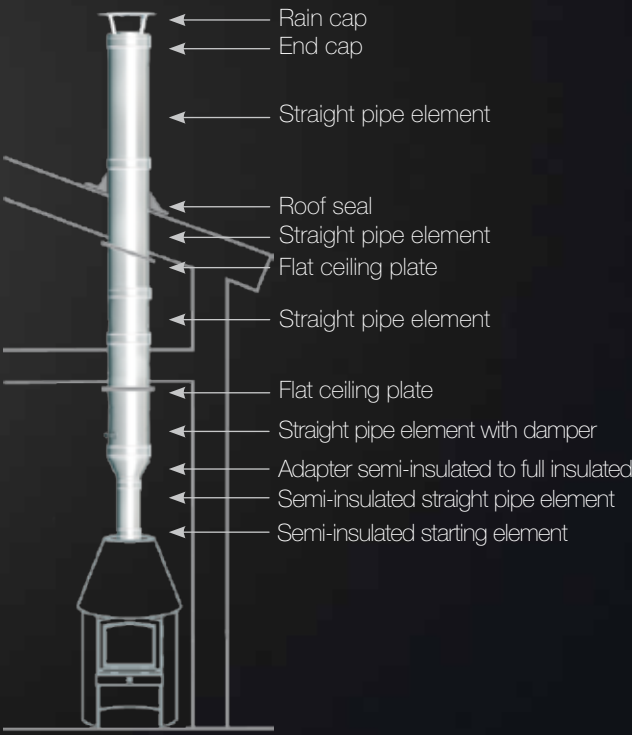
Installation from on top of the fireplace



Installation with non-insulated connection pipe

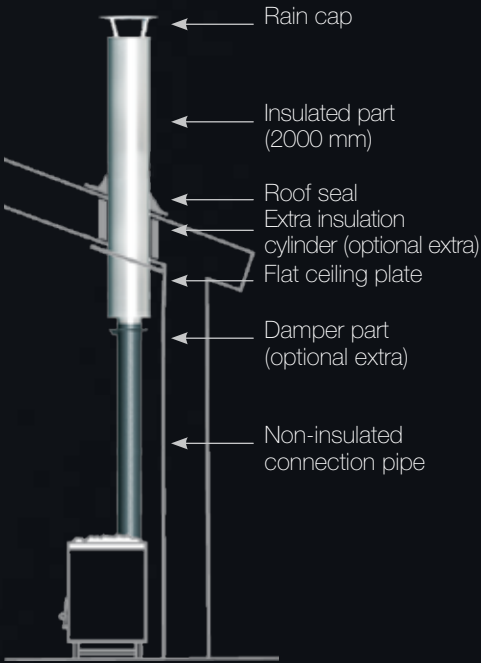


Installation from on top of the fireplace semi-isolated start



Kastor chimney set

The Kastor Chimney Set is a ready to install package that includes the uninsulated connection pipe, ceiling plate, 2 metres of insulated section and the rain cap.







# TECHNICAL DATA

Depending on the region you live in, there may be local performance requirements related to wood fired sauna stoves and fireplaces. Always check first to make sure you understand what's possible—the technical data in these pages can help, as can your nearest Kastor representative.



Wood burning heaters

KARHU

Model	Sauna size (m³)	Grate	Output (kw)	Sauna stove measurements width x depth x height (mm)	Safety distance from sauna stove (mm)				Extension neck width x height x (length)		Water tank (l)	Flue opening Ø (mm)	Distance of top flue opening: from rear edge to centre of flue opening (mm)	Distance of top flue opening: from top edge to surface of flue opening (mm)	Distance between rear flue opening's lower edge and floor (mm)	Weight without stones (kg)	Stone capacity (kg)	Model
					In front	To the side (from the tank)	Behind	Above										
KARHU-007	5 – 7	KARHU	7	330 x 430 x 600	500 (1000)	500	500	1200	–		–	104	110	60	410	32	25 – 30	KARHU-007
KARHU-12	5 – 12	KARHU	12	410 x 480 x 660	500 (1000)	500	500	1200	–		–	104	110	68	450	48	40	KARHU-12
KARHU-12 VO	5 – 9	KARHU	12	575 x 480 x 660	500 (1000)	500 (150**)	500	1200	–		25	104	110	68	450	53	40	KARHU-12 VO
KARHU-12 VV	5 – 9	KARHU	12	575 x 480 x 660	500 (1000)	500 (150**)	500	1200	–		25	104	110	68	450	53	40	KARHU-12 VV
KARHU-12 JK	5 – 12	KARHU	12	410 x 480 x 660	500 (1000)	500	500	1200	275 x 410 (x185)		–	104	front edge 110	68	connection only from top	50	40	KARHU-12 JK
KARHU-12 JK VO	5 – 9	KARHU	12	575 x 480 x 660*	500 (1000)	500 (150**)	500	1200	275 x 410 (x185)		25	104	front edge 110	68	connection only from top	55	40	KARHU-12 JK VO
KARHU-12 JK VV	5 – 9	KARHU	12	575 x 480 x 660*	500(1000)	500 (150**)	500	1200	275 x 410 (x185)		25	104	front edge 110	68	connection only from top	55	40	KARHU-12 JK VV
KARHU-16	9 – 16	KL-16	15	435 x 490 x 710	500 (1000)	500	500	1200	275 x 395 (x185)		–	104	140	75	505	55	40	KARHU-16
KARHU-16 JK VPO	9 – 16	KL-16	15	435 x 490 x 710*	500 (1000)	500	500	1200	275 x 395 (x185)		water pipe 3/4”	104	front edge 140	75	connection only from top	60	40	KARHU-16 JK VPO
KARHU-16 JK VPV	9 – 16	KL-16	15	435 x 490 x 710*	500 (1000)	500	500	1200	275 x 395 (x185)		water pipe 3/4”	104	front edge 140	75	connection only from top	60	40	KARHU-16 JK VPV
KARHU-16 JK	9 – 16	KL-16	15	435 x 490 x 710*	500 (1000)	500	500	1200	275 x 395 (x185)		–	104	front edge 140	75	connection only from top	59	40	KARHU-16 JK
KARHU-20	8 – 20	KARHU	18	480 x 480 x 780	500 (1000)	500	500	1200	–		–	104	140	102	513	62	60	KARHU-20
KARHU-20 VO	8 – 17	KARHU	18	650 x 480 x 780	500 (1000)	500 (150**)	500	1200	–		28	104	140	102	513	67	60	KARHU-20 VO
KARHU-20 VV	8 – 17	KARHU	18	650 x 480 x 780	500 (1000)	500 (150**)	500	1200	–		28	104	140	102	513	67	60	KARHU-20 VV
KARHU-20 JK	8 – 20	KARHU	18	480 x 480 x 780*	500 (1000)	500 (150**)	500	1200	275 x 410 (x185)		–	104	140	102	connection only from top	65	60	KARHU-20 JK
KARHU-20 JK VO	8 – 17	KARHU	18	650 x 480 x 780*	500 (1000)	500 (150**)	500	1200	275 x 410 (x185)		28	104	front edge 140	102	connection only from top	69	60	KARHU-20 JK VO
KARHU-20 JK VV	8 – 17	KARHU	18	650 x 480 x 780*	500 (1000)	500 (150**)	500	1200	275 x 410 (x185)		28	104	front edge 140	102	connection only from top	69	60	KARHU-20 JK VV
KARHU-27	17 – 27	KARHU	20	480 x 480 x 920	500 (1000)	500	500	1200	–		–	129	140	120	640	72	65	KARHU-27
KARHU-27 VO	15 – 24	KARHU	20	650 x 480 x 920	500 (1000)	500 (150**)	500	1200	–		28	129	140	120	640	77	65	KARHU-27 VO
KARHU-27 VV	15 – 24	KARHU	20	650 x 480 x 920	500 (1000)	500 (150**)	500	1200	–		28	129	140	120	640	77	65	KARHU-27 VV
KARHU-27 VOV	15 – 21	KARHU	20	820 x 480 x 920	500 (1000)	(150**)	500	1200	–		2x28	129	140	120	640	83	65	KARHU-27 VOV
KARHU-27 JK	17 – 27	KARHU	20	480 x 480 x 920*	500 (1000)	500	500	1200	275 x 440 (x185)		–	129	front edge 140	120	connection only from top	74	65	KARHU-27 JK
KARHU-27 JK VO	15 – 24	KARHU	20	650 x 480 x 920*	500 (1000)	500 (150**)	500	1200	275 x 440 (x185)		28	129	front edge 140	120	connection only from top	79	65	KARHU-27 JK VO
KARHU-27 JK VV	15 – 24	KARHU	20	650 x 480 x 920*	500 (1000)	500 (150**)	500	1200	275 x 440 (x185)		28	129	front edge 140	120	connection only from top	79	65	KARHU-27 JK VV
KARHU-37	25 – 37	KARHU	30	570 x 585 x 920	500 (1000)	500	500	1300	–		–	129	140	120	640	118	75	KARHU-37
KARHU-37 VO	23 – 34	KARHU	30	730 x 585 x 920	500 (1000)	500 (150**)	500	1300	–		28	129	145	120	640	125	75	KARHU-37 VO
KARHU-37 VV	23 – 34	KARHU	30	730 x 585 x 920	500 (1000)	500 (150**)	500	1300	–		28	129	145	120	640	125	75	KARHU-37 VV
KARHU-37 JK	25 – 37	KARHU	30	570 x 585 x 920*	500 (1000)	500	500	1300	275 x 440 (x185)		–	129	front edge 140	120	connection only from top	120	75	KARHU-37 JK
KARHU-37 JK VO	23 – 34	KARHU	30	730 x 585 x 920*	500 (1000)	500 (150**)	500	1300	275 x 440 (x185)		28	129	front edge 140	120	connection only from top	127	75	KARHU-37 JK VO
KARHU-37 JK VV	23 – 34	KARHU	30	730 x 585 x 920*	500 (1000)	500 (150**)	500	1300	275 x 440 (x185)		28	129	front edge 140	120	connection only from top	127	75	KARHU-37 JK VV
KASTOR KARHU-18 ES	8 – 18	KL-16	18	410 x 570 x 780	500 (1000)	500	500	1200	–		22	115	45	135	593	60	60	KARHU-18 ES
KASTOR KARHU-28 ES	12 – 28	KL-16	20	410 x 690 x 780	500 (1000)	500	500	1200	–		22	115	55	135	593	75	65	KARHU-28 ES
KASTOR KARHU-PATA	–	KL-16	15	410 x 570 x 775	500 (1000)	500	500	1000	–		60	115	30	100	593	41	–	KASTOR KARHU-PATA

\*Stove dimensions inside the sauna. \*\*Measure from the water tank side.

Explanations

VO = Water tank on the right side seen from the door.  
VV = Water tank on the left side seen from the door.  
VOV = Water tank on both sides.  
JK = Small door, through the wall, tunnel model.  
ES = Water tank in front.

KARHU-12, KARHU-20, KARHU-27 and KARHU-37 are equipped with adjustable front legs.

Good to know

- Visible tile and glass surfaces increase the cubic volume by 3 m³ per each tile wall or single glass wall square metre exceeding 2 m².
- If the sauna has uninsulated log walls, 25 % should be added to the volume. If in between sizes, always choose the larger sauna stove model.
- The stones of a wood burning sauna stove should be at least 10 cm in diameter.



Wood burning heaters

KSIS / SAGA / INCENDO

Model	Sauna size (m³)	Grate	Output (kW)	Sauna stove measurements width x depth x height (mm)	Safety distance from sauna stove (mm)				Extension neck width x height x (length)		Water tank (l)	Flue opening Ø (mm)	Distance of top flue opening: from rear edge to centre of flue opening (mm)	Distance of top flue opening: from top edge to surface of flue opening (mm)	Distance between rear flue opening's lower edge and floor (mm)	Weight without stones (kg)	Stone capacity (kg)	Model
					In front	To the side (from the tank)	Behind	Above										
KSIS-20	8 – 20	KARHU	18	490 x 490 x 786*	500 (1000)	500	500	1200	405 x 535 (185 – 335)		–	129	140	102	connection only from top	76	60	KSIS-20
KSIS-20 VO***	8 – 17	KARHU	18	650 x 480 x 780	500(1000)	500 (150**)	500	1200	405 x 535 (185 – 335)		28	104	104	102	513	80	60	KSIS-20 VO***
KSIS-20 VV***	8 – 16	KARHU	18	655 x 490 x 786*	500	500 (150**)	500	1200	405 x 535 (185 – 335)		28	129	front edge 140	102	connection only from top	80	60	KSIS-20 VV***
KSIS-20 VVV***	8 – 14	KARHU	18	820 x 490 x 786*	500(1000)	500 (150**)	500	1200	405 x 535 (185 – 335)		28	129	140	102	connection only from top	80	60	KSIS-20 VVV***
KSIS-20 TS***	8 – 20	KARHU	18	470 x 420 x 772*	500/1000	1000****	1000****	1200	405 x 535 (185 – 335)		–	129	side opening 312	side opening 94	connection from side 549	70	60	KSIS-20 TS ***
KSIS-20 TS 1	8 – 17	KARHU	18	490 x 490 x 786*	500 (1000)	500	500	1200	405 x 475 (170 – 280)		–	129	140	102	connection only from top	76	60	KSIS-20 TS 1
KSIS-27***	17 – 27	KARHU	20	490 x 490 x 920*	500 (1000)	500	500	1200	405 x 535 (185 – 335)		–	129	140	120	connection only from top	86	65	KSIS-27***
KSIS-27 VO***	17 – 26	KARHU	20	655 x 490 x 920	500(1000)	500 (150**)	500	1200	405 x 535 (185 – 335)		28	129	front edge 140	120	connection only from top	90	65	KSIS-27 VO***
KSIS-27 VV***	17 – 26	KARHU	20	655 x 490 x 920*	500	500 (150**)	500	1200	405 x 535 (185 – 335)		28	129	140	120	connection only from top	90	65	KSIS-27 VV***
KSIS-27 TS***	17 – 27	KARHU	20	470 x 420 x 915*	500/1000	1000****	1000****	1200	405 x 535 (185 – 335)		–	129	side opening 312	side opening 110	connection from side 676	80	65	KSIS-27 TS***
KSIS-27 TS 1	17 – 27	KARHU	20	490 x 490 x 920*	500 (1000)	500	500	1200	405 x 475 (170 – 280)		–	129	140	120	connection only from top	86	65	KSIS-27 TS 1
KSIS-37	25 – 37	KARHU	30	490 x 490 x 920*	500 (1000)	500	500	1200	405 x 535 (185 – 335)		–	129	145	120	connection only from top	135	75	KSIS-37
KSIS-37 VO***	23 – 34	KARHU	30	740 x 610 x 920	500(1000)	500 (150**)	500	1200	405 x 535 (185 – 335)		28	129	front edge 140	120	connection only from top	140	75	KSIS-37 VO***
KSIS-37 VV***	23 – 34	KARHU	30	740 x 610 x 920	500(1000)	500 (150**)	500	1200	405 x 535 (185 – 335)		28	129	front edge 140	120	connection only from top	140	75	KSIS-37 VV***
KSIS-37 TS***	25 – 37	KARHU	30	526 x 517 x 915	500/1000	1000****	1000****	1300	405 x 535 (185 – 335)		–	129	side opening 410	side opening 112	connection from side 675	131	75	KSIS-37 TS***
SAGA-20	8 – 20	KARHU	18	600 x 580 x 820	500 (1000)	500	500	1200	–		–	104	front edge 160	228	578	82	150	SAGA-20
SAGA-20 JK	8 – 20	KARHU	18	600 x 580 x 820*	500 (1000)	500	500	1200	217 x 380 (165)		–	104	front edge 160	228	connection only from top	87	150	SAGA-20 JK
SAGA-20 KSIL	8 – 20	KARHU	18	600 x 580 x 820*	500 (1000)	500	500	1200	405 x 535 (195 – 320)		–	104	front edge 160	228	connection only from top	92	150	SAGA-20 KSIL
SAGA-27	17 – 27	KARHU	20	674 x 583 x 929	500 (1000)	500	500	1200	–		–	129	160	95	702	95	185	SAGA-27
SAGA-27 JK	17 – 27	KARHU	20	674 x 583 x 929*	500 (1000)	500	500	1200	217 x 415 (175)		–	129	front edge 160	95	connection only from top	103	200	SAGA-27 JK
SAGA-27 KSIL	17 – 27	KARHU	20	674 x 583 x 929	500 (1000)	500	500	1200	405 x 535 (195 – 320)		–	129	front edge 160	95	connection only from top	120	200	SAGA-27 KSIL
INCENDO-20	8 – 20	KARHU	18	520 x 546 x 928	500 (1000)	500	500	1200	–		–	104	165	228	532	99	60	INCENDO-20
INCENDO-20 TS 1	8 – 20	KARHU	18	520 x 546 x 928*	500 (1000)	200	500	1200	405 x 477 (200 – 335)		–	129	165	228	connection only from top	119	60	INCENDO-20 TS 1
INCENDO-27 TS 1	17 – 27	KARHU	20	520 x 546 x 1050*	500 (1000)	200	500	1200	405 x 477 (200 – 335)		–	129	165	228	connection only from top	130	65	INCENDO-27 TS 1
INCENDO-20 + WATER TANK SET-20	8 – 17	KARHU	18	670 x 546 x 928	500(1000)	200 (150**)	200	1200	405 x 477 (200 – 335)		28	104	front edge 165	228	connection only from top	119+10	70	INCENDO-20 + WATER TANK SET-20
WATERTANK SET-20	–	–	–	width 185	–	150**	–	–	–		28	–	–	–	–	10	–	WATERTANK SET-20

\*Stove dimensions inside the sauna. \*\*Measure from the water tank side. \*\*\*KSIS-20, 27 and 37 front frame must be mentioned when ordering, basic code does not include frame. \*\*\*\*Measure without stone panel.

Explanations

VO = Water tank on the right side seen from the door.  
VV = Water tank on the left side seen from the door.  
VVV = Water tank on both sides and infront of the heater.  
JK = Small door, through the wall, tunnel model.  
KSIL = Big door, through the wall, tunnel model.  
TS = Side output model without mantle.  
TS 1 = Large fireplace door.

INCENDO-20 and INCENDO-27 are equipped with adjustable legs at each corner.

Good to know

- Visible tile and glass surfaces increase the cubic volume by 3 m³ per each tile wall or single glass wall square metre exceeding 2 m².
- If the sauna has uninsulated log walls, 25 % should be added to the volume. If in between sizes, always choose the larger sauna stove model.
- The stones of a wood burning sauna stove should be at least 10 cm in diameter.



Fireplaces

Model	Room volume max (m³)	Output (kW)	Output range (kW)	Width x Depth x Height (mm)	Safety distance from fireplace (mm)				Flue opening (mm)		Distance of top flue opening: from rear edge to centre of flue opening (mm)	Top flue opening: Distance from rear edge to centre (mm)	Distance between rear flue opening's lower edge and floor (mm)	Module chimney from back and top (mm)	Weight including back stones in brackets (kg)	Model
					Front	Side	Behind	Above								
MELODY SWING	230	7	2 – 15	560 x 450 x 935	1000	400*	250	600	129		205	202	723	KC Ø 130	204	MELODY SWING
MELODY 920	230	7	2 – 15	616 x 402 x 935	1000	400*	250	600	129		205	202	723	KC Ø 130	287 (307)	MELODY 920
MELODY 920 STEEL	230	7	2 – 15	550 x 402 x 935	1000	400*	250	600	129		205	202	723	KC Ø 130	86	MELODY 920 STEEL
MELODY 1150	230	7	2 – 15	616 x 402 x 1120	1000	400*	250	600	129		723	202	723	KC Ø 130	344 (366)	MELODY 1150
OPERA ROSSO	250	10	2 – 16	640 x 505 x 1315	1000	400*	250	600	129		150	150	1050	KC Ø 130	210	OPERA ROSSO
OPERA NERO				640 x 505 x 1315	1000	400*	250	600	129		150	150	1050	KC Ø 130	210	OPERA NERO
TANGO	200	6	2 – 12	520 x 525 x 1425	1000	400	250	600	129		192	192	1152	KC Ø 130	160	TANGO
BRAVO SOAPSTONE	230	6	2 – 15	630 x 530 x 1140	1000	250	250	600	129		210	210	920	KC Ø 130	270	BRAVO SOAPSTONE
PRINCESS	250	10	2 – 16	670 x 460 x 1130	1000	150**	150	600	156		140	140	870	KC Ø 150	85	PRINCESS

\*Safety distance from the body without a stone panel, with a panel 250 mm. \*\*Safety distance from side glass 500 mm.

Fireplace inserts

Model	Room volume (m³)	Output (kW)	Output range (kW)	Width x Depth x Height (mm)	Clearance (to the side, above, behind)		Flue opening (mm)	Frame width x height (mm)	Installation dimensions (mm)			Weight (kg)	Model
									A	B	C		
TS-1	30 – 200	8	2 – 15	528 x 445 x 480	10 mm**		129	650 x 557	–	280	217	100	TS-1
TS-2	30 – 200	8	2 – 15	528 x 445 x 480	10 mm*		129	605 (+90) x 557	–	280	217	100	TS-2
TS-3	50 – 200	12	2 – 20	664 x 425 x 526	10 mm*		156	792 x 592	–	280	203	126	TS-3
TS-6	20 – 120	5	1 – 10	410 x 406 x 415	10 mm**		129	487 / 578 x 493	–	250	185,5	83	TS-6
TS-26	30 – 200	8	2 – 15	530 x 470 x 480	10 mm**		160	695 x 535	–	305	210	54	TS-26
TS-36	30 – 200	8	2 – 15	530 x 470 x 480	10 mm**		160	695 x 577	–	270	180	56	TS-36
TS-56	30 – 250	10	2 – 16	Drawing B-C x 496	10 mm**		160	Drawing B-C	–	270	180	69	TS-56
TS-57	30 – 250	10	2 – 16	Drawing B-C x 496	10 mm**		160	Drawing B-C	Drawing	Drawing	130	69	TS-57

\* Front frame 14 mm below the framework. \*\* Front frame 0 mm below the framework.

TS-26, TS-36 and TS-77 40 mm legs can be detached, yawl front frame remains 40 mm below the bottom of the framework and the framework height is 440 mm.

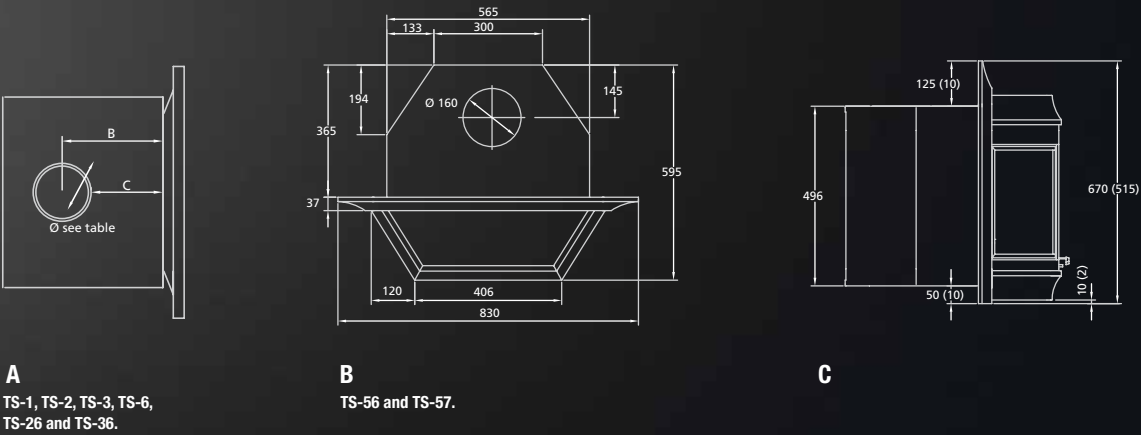


Diagram A includes the installation dimensions of fireplace inserts TS-1, TS-2, TS-3, TS-6, TS-26, TS-36 and TS-77. Diagrams B and C include the installation dimensions of fireplace inserts TS-56 and TS-57. The dimensions in brackets are the dimensions for TS-57.



Modular chimneys

Model	Internal pipe (mm)	Inner diameter (mm)	Outer diameter (mm)	Safety distance (mm)		Heat class	Weight (kg/m)	CE approval	Model
KASTOR KC MODULE CHIMNEY 100	1	100	220	50		T600	approximately 10 kg	Yes	KASTOR KC MODULE CHIMNEY 100
KASTOR KC MODULE CHIMNEY 130	1	130	250	50		T600	approximately 11 kg	Yes	KASTOR KC MODULE CHIMNEY 130
KASTOR KC MODULE CHIMNEY 150	1	150	270	50		T600	approximately 13 kg	Yes	KASTOR KC MODULE CHIMNEY 150
KASTOR KC MODULE CHIMNEY 180	1	180	300	50		T600	approximately 14 kg	Yes	KASTOR KC MODULE CHIMNEY 180
KASTOR KC MODULE CHIMNEY 225	1	225	355	50		T600	approximately 17 kg	Yes	KASTOR KC MODULE CHIMNEY 225

Outer mantle available in colours RST, painted: black, red, grey, white. Internal pipe acid resistant. Lengths of parts 250 mm, 500 mm and 1,000 mm. Useful lengths: 190 mm, 440 mm, 940 mm.

Chimney set

Model	Internal pipe (mm)	Inner diameter (mm)	Outer diameter (mm)	Safety distance (mm)	Heat class	CE approval	Weight (kg/m)
CHIMNEY SET-100	1	100	220	50	T600	Yes	(approximately) 10
CHIMNEY SET-130	1	130	250	50	T600	Yes	(approximately) 11

Outer mantle RST. Internal pipe acid resistant.

Kastor Chimney Set:  
Insulated part 2,000 mm.  
Insulated part extendable max. up to 5 metres.

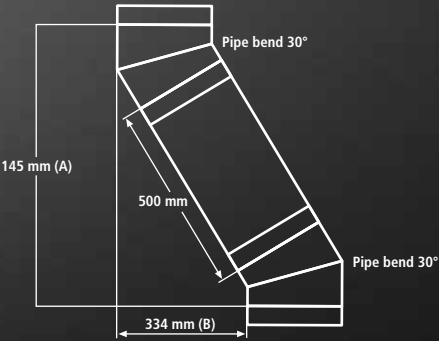
Kastor Chimney Set includes:  
Uninsulated connecting pipe, insulated part, rain cap, rain collar, ceiling plate (inclination 0-30°).

Chimney calculator

A modular chimney consists of several parts in different sizes. The size and shape of these modules are determined by the installation location and the fireplace's dimensions. The chimney calculator allows you to find out quickly exactly which modules you need. Print out Your calculation and take it to your Kastor dealer. The chimney calculator is on the web at [www.kastor.fi](http://www.kastor.fi)

Model	Length of straight pipe element [A] (mm)	Lateral movement [B] (mm)	Rise (mm)	Angle of pipe bend
LATERAL MOVEMENT				
2 x pipe bend	–	116	371	30°
2 x pipe bend + straight pipe element 250	250	209	532	30°
2 x pipe bend + straight pipe element 500	500	334	749	30°
2 x pipe bend + straight pipe element 1000	1000	584	1182	30°

Straight pipe element 500







Kastor reserves the right to  
change specifications and  
design without a notice.

Produced by Markenvard Media  
Printed by PA GROUP  
© 2012 HELO OY





HELO OY  
Tehtaankatu 5 – 7  
11710 RIIHIMÄKI  
FINLAND  
[www.kastor.fi](http://www.kastor.fi)